

EskoArtwork workflow at Reynders Etiketten

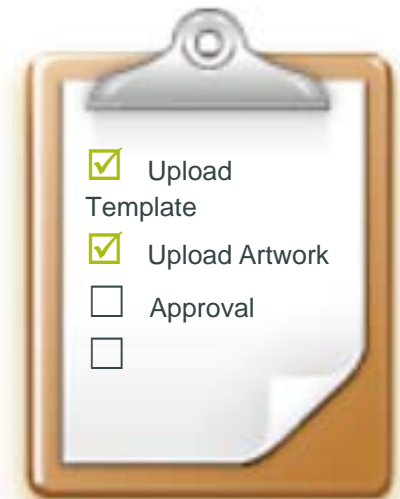
Jan De Roeck – Director Solutions Management

October 16th, 2009

International Circle Congress 2009

Today's Presentation

1. Introduction to EskoArtwork
2. Reynders Etiketten NV. – Prepress workflow



Introduction to EskoArtwork

1

Connect More!

**Efficiency in
package design and printing.**

*from design to production,
from concept to counter*

**Tools and know-how -
integrated solutions reduce
cost and increase quality**

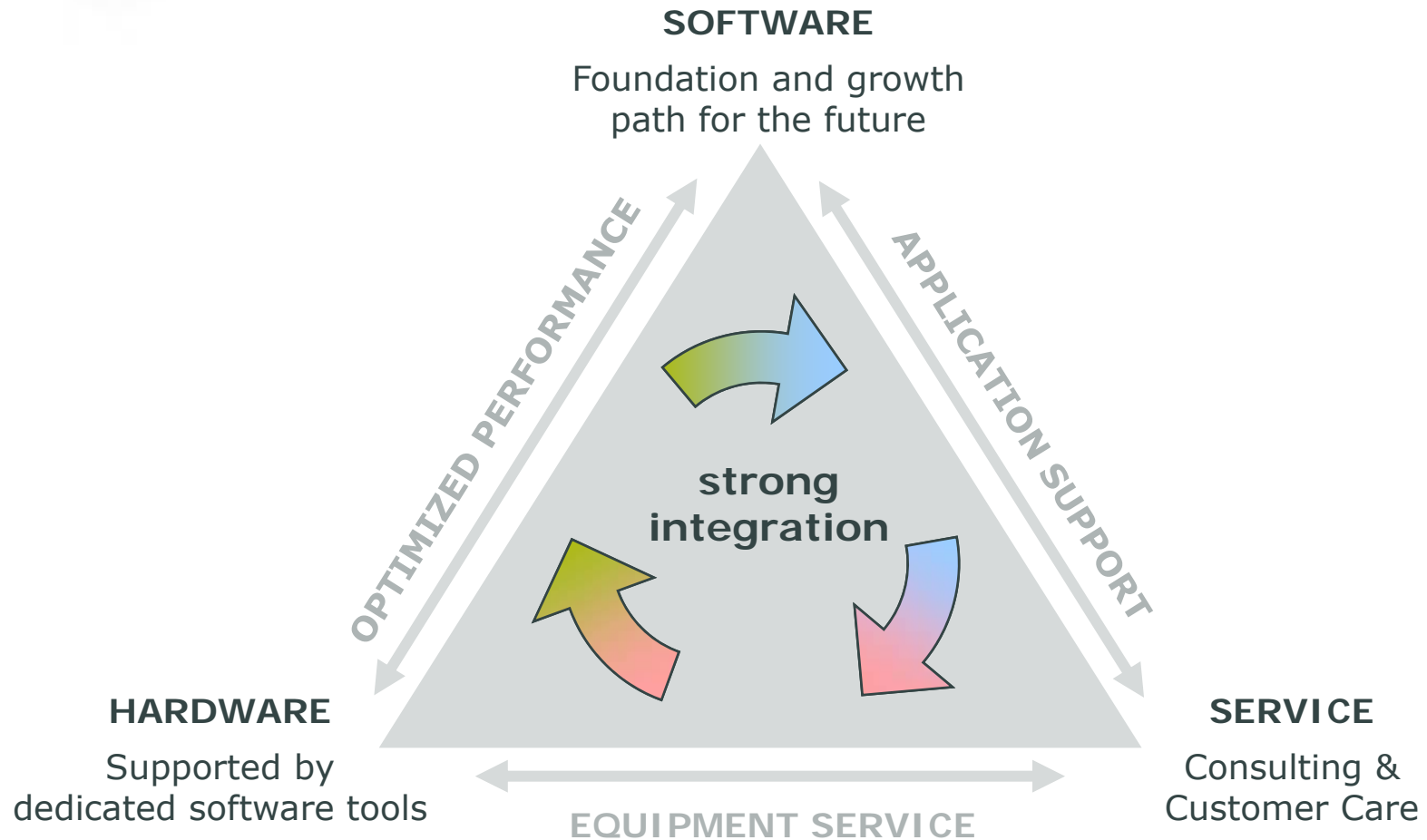
Productivity for profitability

**Connecting people, processes,
systems and tools**

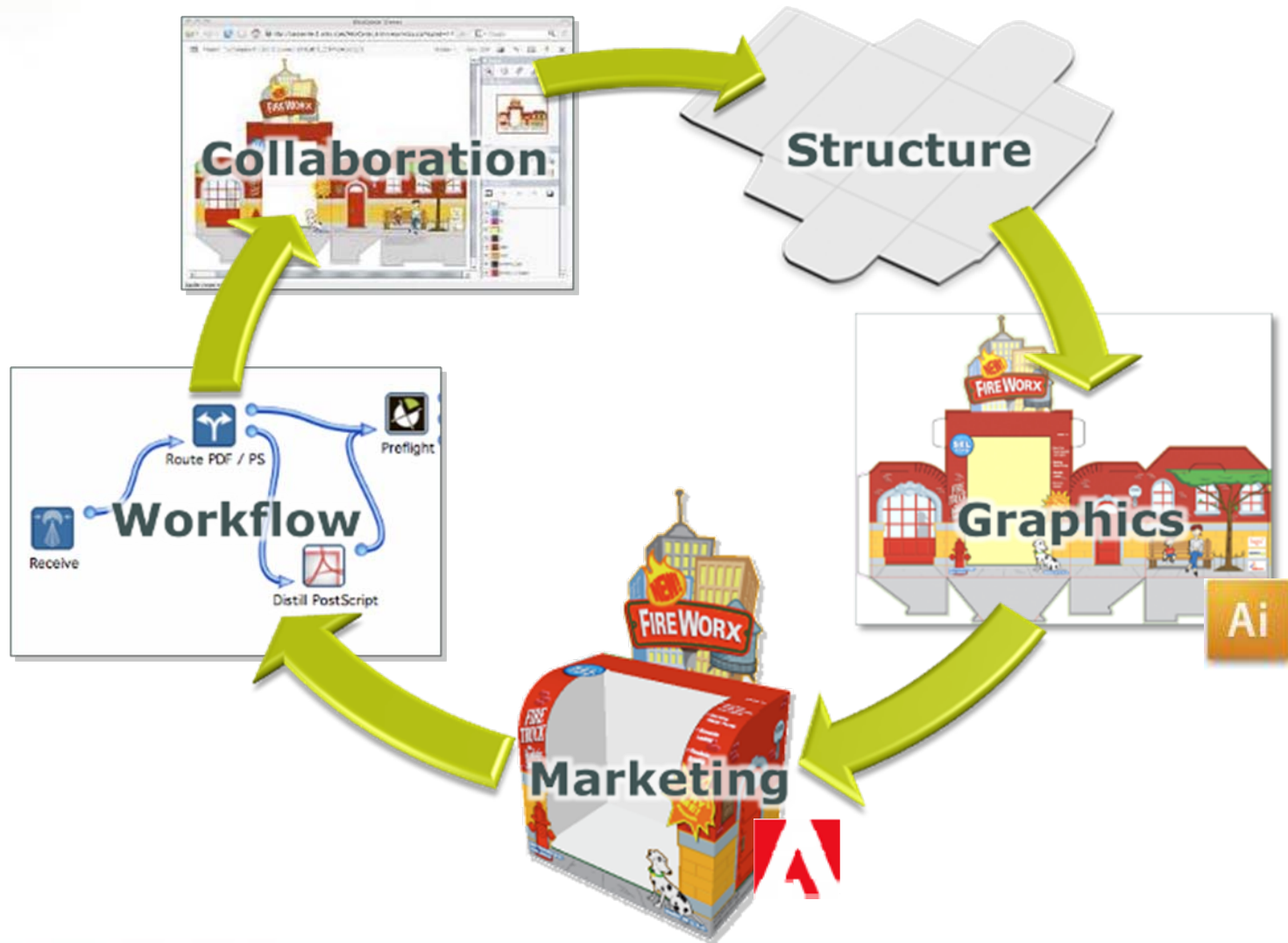
More than 35 years of expertise



EskoArtwork – Solutions business model



EskoArtwork – Software Packaging Design & Manufacturing



EskoArtwork – Flexo CtP product portfolio



CDI Spark 2120
Plates up to 533x508mm



CDI Spark 2530
Plates up to 635x762mm



CDI Spark 4835
Plates up to 1200x900mm



CDI Compact 4835
Plates up to 1200x900mm
Sleeves up to 1300mm



CDI Spark 4260
Plates up to 1067x1524mm



CDI Spark 4260 Auto
Plates up to 1067x1524mm



CDI Spark 5080
Plates up to 1270x2032mm



CDI Advance 5080
Plates up to 1270x2032mm
Sleeves up to 2110mm



CDI Advance Cantilever
Sleeves up to 2110mm
Plates up to 1270x2032mm

EskoArtwork – Digital converting tables



Esko Kongsberg *i-XE*
Sizes 800x1100mm to 1600x3050mm



Esko Kongsberg XE/XL
Sizes 800x1100mm to 2210x4800mm



Esko Kongsberg XP
Size 1680x3200mm



Esko Kongsberg *i-XL*
Sizes 1270x1680mm to 2210x3050mm



Esko Kongsberg DCM
Size 1630x3200mm

Reynders Etiketten NV. – Prepress Workflow

2

Label Converting workflow

Materials



Converting



Application



Final Product



Reynders Etiketten

Prepress workflow



From idea ...
... to print-ready separations



Design

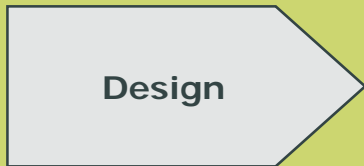
Prepress &
Sheet Layout

Output &
Workflow
Management

Color
Management &
Proofing

Prepress Workflow – EskoArtwork solutions

Software



Hardware



MIS integration

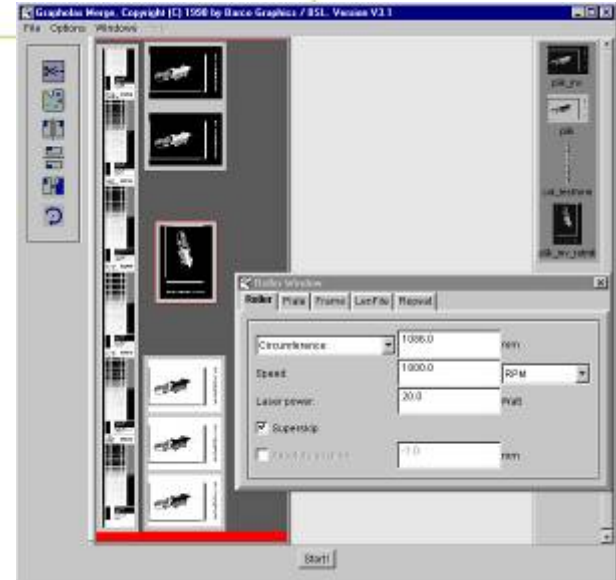
- Bi-directional link between prepress workflow and business system
- Single point of entry for design specifications and critical data
- Tracking and traceability
- The result:
 - Reduced errors in the workflow
 - Less product recalls due to typing errors



Digital Flexo Suite

- Grapholas® comes with any CDI
 - Merger (Plate layout)
 - TIFF or LEN input file format
 - Plate usage optimization
 - Cut marks and more
 - Templates for drag and drop positioning
 - Esko Viewer (QA)
 - Job information report

- PlatePrep – parallel job preparation
 - Standalone Grapholas® Merger
 - Multiple CDI support

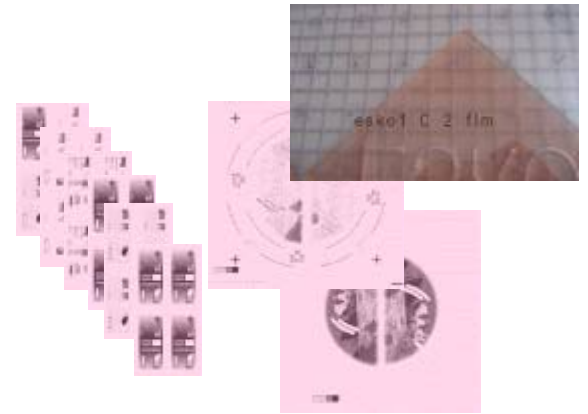
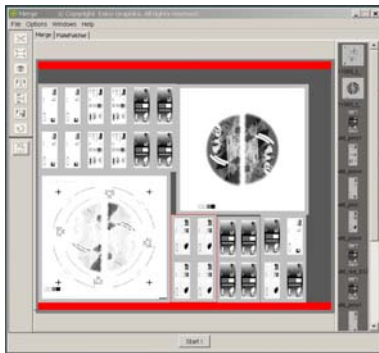


Digital Flexo Suite for Labels

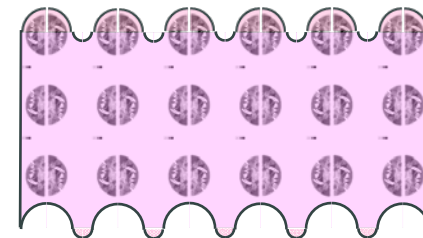
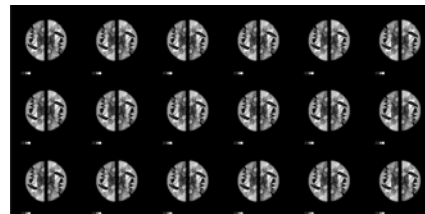
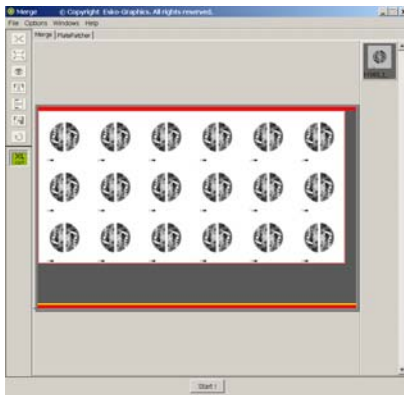
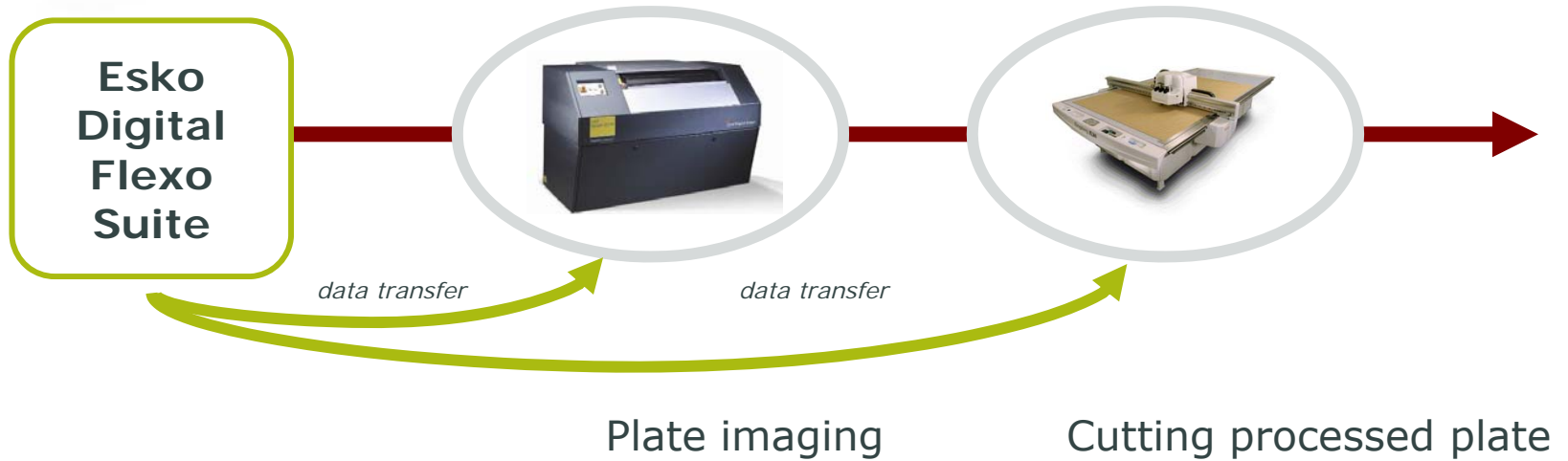


Plate imaging

Plotting of Job-ID -
Cutting processed plate



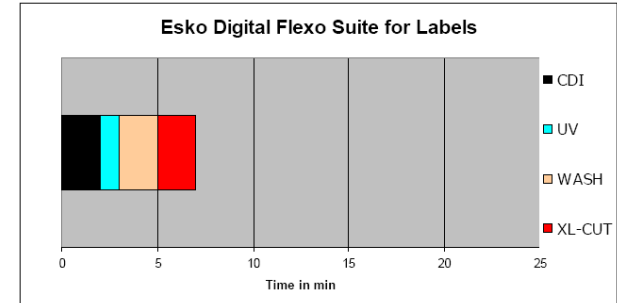
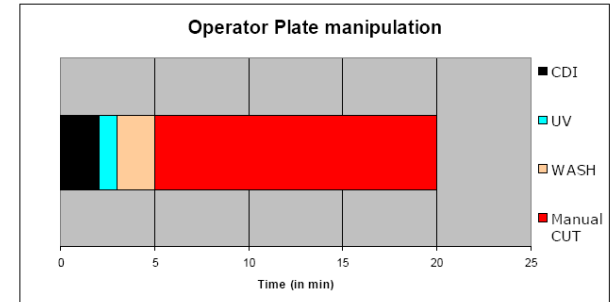
Digital Flexo Suite for Labels – Cut Outlines



User definable cut outline!

Reynders Etiketten NV. – Digital Flexo Suite savings

- Increase of cutting capacity by 300%
 - Reduction of 3 manual cutting cycles to 1 automatic cut (15 min to 2 min)
- Perfect fit on press cylinder
- Easy to read job-ID on back of plate
 - Error reduction
- More balanced work steps
- Less material loss
- Increased throughput



Connect More!

ESKO
artwork



www.esko.com